

## Directions:



Grade	Working (s)	Stop(s)
G1	5	360
G2	5	180
G3	10	120
G4	10	60

## Directions:



### ⚠ WARNING

1. After installation, please keep the machine vertical. Tilt or lie flatly may cause oil overflow. The machine efficiency may be affected if the circuit board is contaminated.
2. Shall not modify, disassemble or repair the machine arbitrarily. Any failure happens, please contact relevant technician in time.
3. Do NOT use quick charger for device.
4. Do not use the device in temperatures above 70°



# SENSEI

THE AROMA CULT

## CAR / ROOM DIFFUSER



A601  

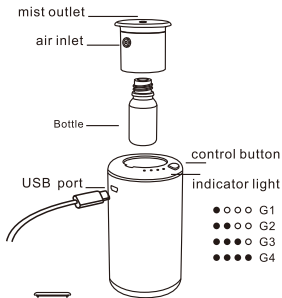


## SPECIFICATIONS



Product : A601  
Dimension : 70\*133mm  
Input Voltage : 5V  
Power : 1.5W  
Bottle Capacity : 30 ml  
G.W. : 220g  
Consumption : 0.02-0.10ml/h  
Coverage : 10m<sup>2</sup>

## Directions:



Machine



Bottle



USB cable



Manual

● ○ ○ ○ G1

Recharge status

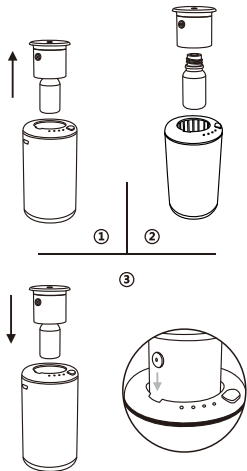
Battery recharging -- Red light flashing

Battery full recharge -- Red light off

Battery out of power- Red light on

(It takes about 1 hour to recharge the battery fully, and one full recharge can last about 2-3 hours.)

## Directions:



When change oil bottle, the vent hole of bottle should be right towards the gap of the body.